

# Lessard-Sams Outdoor Heritage Council

## Fiscal Year 2017 / ML 2016 Request for Funding



**Date:** June 03, 2015

**Program or Project Title:** Camp Ripley ACUB - Phase VI

**Funds Requested:** \$3,000,000

**Manager's Name:** Helen McLennan

**Organization:** Morrison SWCD

**Address:** 16776 Heron Rd

**City:** Little Falls, MN 56345

**Office Number:** 320-616-2479

**Email:** helen.mclennan@mn.nacdnet.net

**County Locations:** Cass, Crow Wing, and Morrison.

### Regions in which work will take place:

- Northern Forest
- Forest / Prairie Transition

### Activity types:

- Protect in Easement

### Priority resources addressed by activity:

- Wetlands
- Forest

### Abstract:

The RIM Camp Ripley Partnership, Phase VI will protect and restore 1,320 acres of high quality habitat along the Mississippi and Crow Wing Rivers and buffer the Nokasippi and Gull River WMAs, using approximately 22 conservation easements.

### Design and scope of work:

The purpose of this initiative is to protect approximately 1,320 acres of fish, game, migratory bird, and forest habitat along the Crow Wing, Gull, Nokasippi, and Mississippi River corridors via 22 permanent conservation easements. This project will utilize partnerships with Camp Ripley, a State Game Refuge, the Board of Water and Soil Resources (BWSR) and the Morrison Soil and Water Conservation District (SWCD) to implement natural resource management and planning to protect the Nokasippi River and Gull River Wildlife Management Areas (WMAs). These river corridors are critical to the general public for fishing, hunting, and recreational opportunities. In addition, this corridor is instrumental to the State of Minnesota, MN National Guard (MNNG) and National Guard Bureau (NGB), local economy, the National Mississippi River Flyway, and Mississippi Head Waters Board.

MN DNR 2009 and 2010 fish surveys on the Crow Wing River (Staples to confluence of Mississippi) and Mississippi River (Brainerd to Little Falls) indicate high quality fish communities of walleye, muskellunge, and small-mouth bass. Also, Camp Ripley is home to one of the southern-most wolf populations in Minnesota and 65 species of Greatest Conservation Need including the state's highest population of red shouldered hawks. Not only do the river corridors contain wildlife habitat but also provide public recreation opportunities. Camp Ripley along with the MN DNR hosts the largest public archery hunt in the United States with over 5,000 participants chasing record-book whitetails. Additionally, Camp Ripley also hosts deer hunts, i.e. Disabled American Veterans (DAV), youth hunt, Deployed Soldier Archery, and Deployed Soldier Muzzleloader. A Deployed Soldier and DAV turkey hunt are also provided along with a Trolling for the Troops fishing event. More than 13,000 hunting/angling person-days occur on Camp Ripley annually. Camp Ripley also makes available to the general public access to over 1,800 acres for walk-in recreational activities to include hunting on Camp lands adjacent to the Camp fence. The Crow Wing and Mississippi Rivers contain over 15 public access points from Staples to the confluence of Mississippi and from Brainerd to Little Falls respectively. This project will protect the current habitat along existing public access areas.

Development along these corridors will have adverse effects to existing high quality wildlife habitat, local economies, and to the MNNG training program. Camp Ripley is located immediately adjacent to the confluence of the Crow Wing and Mississippi Rivers. Camp Ripley contains 18 miles of Mississippi River frontage and 8 miles of Crow Wing River frontage. In many examples across the nation development adjacent to military training sites has limited the facilities' ability to maintain their military mission. For example, the east shore of the Mississippi River has experienced high decibel levels due to weapon firing, and is also near the flight path of the Camp Ripley airfield. For that reason, the MNNG has asked the partnership to focus on land parcels directly adjacent to the Mississippi and Crow Wing Rivers to help reduce potential conflicts with homeowners. In 2014, Camp Ripley's economic impact to the local economy was \$315 million dollars and Camp Ripley is the largest employer in Morrison County.

This project will build upon existing Camp Ripley partnership success with the Army Compatible Use Buffer program (ACUB). This federal program provides funds to protect adjacent lands from encroaching development and in the process protects the training center. Since 2004, Camp Ripley partners have completed 138 land transactions. The MN DNR completed 19 transactions representing 1,792 acres and BWSR completed 123 land transactions representing 15,000 acres. Collectively, Camp Ripley partners enrolled over 16,792 acres into conservation easements and fee acquisitions.

Easements that focus on forest, riparian and high value ecological habitat are funded through the OHF. Easements that are primarily working agricultural lands and provide a direct buffer to Camp Ripley are funded through the Army Compatible Use Buffer (ACUB) program. So although not directly leveraging funds on the same piece of land the overall project indirectly leverages federal and state funds. Camp Ripley has leveraged over \$23 million dollars from National Guard Bureau and Department of Army and is a national leader in the Army Compatible Use Buffer (ACUB) program. Camp Ripley plans to leverage 2015-16 NGB and Department of Army federal funds to match LSOHC funds. This project will indirectly leverage \$3.883 million federal funding.

Furthermore, from 2010 through 2014, Camp Ripley partnership had huge success with the LSOHC Little Nokasippi WMA project. The partnership enrolled 2,371.5 acres into conservation easements, increased public access to the WMA by 262 acres, and buffered the WMA from future development. This project will utilize lessons learned from the 2010, 2011, 2012, 2013, and 2014 LSOHC grants and will complement the MN DNR Gull River WMA.

Currently, the partnership has over 40 landowners signed up ready to participate in the program with a total of 285 landowners on a waiting list.

## Crops:

Will there be planting of corn or any crop on OHF land purchased or restored in this program - **No**

## How does the request address MN habitats that have: historical value to fish and wildlife, wildlife species of greatest conservation need, MN County Biological Survey data, and/or rare, threatened and endangered species inventories:

With the proposed funds the Camp Ripley partnership plans to complete conservation easements along the Mississippi, Gull, Nokasippi, and Crow Wing Rivers. Additionally, Crow Wing and Morrison SWCDs will work with landowners to assist with forest management and cost-share forestry programs. The partnership will act quickly and efficiently to protect this high quality riparian habitat before it is developed or converted to agricultural uses, and while the residents are willing to convey easements.

These river corridors are also very vulnerable to habitat degradation through development and forest to cropland conversion. The Hwy 371 Little Falls to Brainerd corridor is projected to have some of the highest growth rates outside the metropolitan area. According to the 2010 US Census Bureau, the City of Baxter's population has increased 37 percent and Cass County's population increased by 5 percent from 2000 to 2010. Impervious surface cover has increased in Sylvan, Crow Wing, and Fort Ripley townships over the last 10 years with much of the development near the Gull, Mississippi, and Crow Wing Rivers (UMN Land Cover 1990-2000). The majority of the lakes have exhausted available development space leaving these major rivers vulnerable to new development.

## What is the nature of urgency and why it is necessary to spend public money for this work as soon as possible:

Development pressure along this vulnerable corridor will continue and securing RIM easements will protect habitat and forestland from further parcelization and fragmentation as well as forest to cropland conversion, especially irrigated agriculture. The indirect federal leverage is currently available and reflects partner agency's priorities of permanently protecting these areas.

## Describe the science based planning and evaluation model used:

We target parcels within the 3 mile radius around Camp Ripley adjacent to one another to create habitat corridors consistent with natural resource management. Evaluation criteria also includes ecological and habitat factors for resident and migratory wildlife

species. The target work area contains high value existing habitat and public accessibility.

## Which sections of the Minnesota Statewide Conservation and Preservation Plan are applicable to this project:

- H1 Protect priority land habitats
- H2 Protect critical shoreland of streams and lakes

## Which other plans are addressed in this proposal:

- Minnesota Forest Resource Council Landscape Plans
- Outdoor Heritage Fund: A 25 Year Framework

## Which LSOHC section priorities are addressed in this proposal:

### Forest / Prairie Transition:

- Protect, enhance, and restore wild rice wetlands, shallow lakes, wetland/grassland complexes, aspen parklands, and shoreland that provide critical habitat for game and nongame wildlife

### Northern Forest:

- Restore forest-based wildlife habitat that has experienced substantial decline in area in recent decades

## Relationship to other funds:

- Environmental and Natural Resource Trust Fund
- Clean Water Fund
- DOD and NGB

Due to the success of the Camp Ripley Partnership, the MN Legislature passed the Sentinel Landscape Designation in 2015. This law will formalize a process that we have used for years to enhance the effect of the ACUB Program and it will complement a national direction of the Department of Defense. Establishing Sentinel Landscapes in State Law will provide a model for the nation and it will allow us to more effectively compete for federal funding from agencies beyond just the Department of Defense. It will also better align federal and state programs that could support private landowners in a Sentinel Landscape. This Sentinel Landscapes initiative can be defined as preserving the working and rural character of our private lands, which is important for both national defense and conservation priorities.

The SWCD offices in Crow Wing and Morrison Counties have applied for Clean Water Funds and LCCMR funds to assist landowners with Forest Stewardship Planning and Nutrient Management Planning and most importantly drainage management. The counties utilize all resources available to enhance the easement properties. Our additional partners and efforts include USDA Natural Resources Conservation Service (NRCS), MN Forest Resource Council, Local Water Planning, County Planning and Zoning Offices, and US Fish and Wildlife Service.

The Conservation Assistance Acceleration Project (CAAP – formerly the Farm Bill Assistance Partnership) with BWSR, DNR, PF, NRCS and SWCDs provides funding to SWCDs to have technicians promote the conservation provisions of the Federal Farm Bill and other conservation program opportunities to private landowners. The Environmental and Natural Resources Trust Fund (ENRTF) provided \$1.0M via an LCCMR recommendation in FY10-11, \$625,000 in FY12-13, \$3.0M in FY 14-15 and \$1.0M in FY 16-17.

## How does this proposal accelerate or supplement your current efforts in this area:

This application accelerates our existing program, and existing success. We have successfully completed 16,792 acres in easements and fee acquisition and are buffering two wildlife management areas that provide public access for hunting and fishing. This proven track record along with \$23 million in federal funding has demonstrated how true partnerships, State and Federal can work together to preserve one of the last great places in Minnesota. Camp Ripley is also partnering with the Minnesota Forest Resources Council (MFRC) Landscape Program, BWSR, SWCD, MN DNR and TNC to maintain sustainable forest resources around Camp Ripley's borders. The Landscape program promotes multi-ownership planning focused on voluntary involvement and implementation of landscape visions, goals and strategies. The Camp Ripley landscape has high quality forested systems and ensuring these systems remain healthy requires proper management. Oak is the most dominant cover type and promoting proper management is key to maintaining the forest health while bringing financial support to the landowners. Even though we have 138 land transactions completed, we have a waiting list of 285 interested landowners within the ACUB project area.

## Describe the source and amount of non-OHF money spent for this work in the past:

Appropriation Year	Source	Amount
2007 - Present	Department of Defense (DOD)/National Guard Bureau (NGB)	\$23,000,000

## How will you sustain and/or maintain this work after the Outdoor Heritage Funds are expended:

Once a RIM easement is acquired, BWSR is responsible for maintenance, inspection and monitoring into perpetuity. The BWSR partners with local SWCDs to carry-out oversight, monitoring and inspection of its conservation easements. Easements are inspected for the first five consecutive years beginning in the year after the easement is recorded. Thereafter, on-site inspections are performed every three years and compliance checks are performed in the other two years. SWCDs report to BWSR on each site inspection conducted and partners' staff document findings. A non-compliance procedure is implemented when potential violations or problems are identified.

Perpetual monitoring and stewardship costs have been calculated at \$6,500 per easement. This value is based on using local SWCD staff for monitoring and landowner relations and existing enforcement authorities. The amount listed for Easement Stewardship covers costs of the SWCD regular monitoring, BWSR oversight, and any enforcement necessary.

## Explain the things you will do in the future to maintain project outcomes:

Year	Source of Funds	Step 1	Step 2	Step 3
2016-Ongoing	Stewardship Account	Compliance Checks first 5 years then every 3rd year.	Corrective actions of any violations.	Enforcement Action taken by MN Attorney Generals office.
2016-Ongoing	Landowner Obligation	Maintain compliance with easement terms.		

## Activity Details:

If funded, this proposal will meet all applicable criteria set forth in MS 97A.056 - **Yes**

Will the eased land be open for public use - **No**

Is the land you plan to acquire free of any other permanent protection - **Yes**

## Accomplishment Timeline:

Activity	Approximate Date Completed
Obtain applications from eligible landowners	June 30, 2017
Allocations to specific parcels	July 30, 2017
Easements Recorded	June 30, 2019
Final report submitted	December 31, 2019

## Federal Funding:

Do you anticipate federal funds as a match for this program - **No**

## Outcomes:

### Programs in the northern forest region:

- Forestlands are protected from development and fragmentation *Camp Ripley lies along 18 miles of the Mississippi, and 8 miles along the Crow Wing River which are critical habitat for waterfowl and other Species of Greatest Conservation Need. We target parcels within the 3 mile radius around Camp Ripley adjacent to one another to create habitat corridors consistent with natural resource management, sustaining large tracts of green space/forested land. This program helps protect a 53,000 acre state game refuge (Camp Ripley) and buffers WMAs on the Gull/Nokasippi Rivers. Lands under easement do not allow development and are enhanced conservation practices to improve habitat and land management.*

### Programs in forest-prairie transition region:

- Rivers and streams provide corridors of habitat including intact areas of forest cover in the east and large wetland/upland complexes in the west *Camp Ripley lies along 18 miles of the Mississippi, and 8 miles along the Crow Wing River which are critical habitat for waterfowl and other Species of Greatest Conservation Need. We target parcels within the 3 mile radius around Camp Ripley adjacent to one another to create habitat corridors consistent with natural resource management, sustaining large tracts of green space/forested land. This program*

*helps protect a 53,000 acre state game refuge (Camp Ripley) and buffers WMAs on the Gull/ Nokasippi Rivers. Lands under easement do not allow development and are enhanced conservation practices to improve habitat and land management.*

# Budget Spreadsheet

**Total Amount of Request: \$3,000,000**

## Budget and Cash Leverage

BudgetName	LSOHC Request	Anticipated Leverage	Leverage Source	Total
Personnel	\$146,000	\$0		\$146,000
Contracts	\$44,000	\$0		\$44,000
Fee Acquisition w/ PILT	\$0	\$0		\$0
Fee Acquisition w/o PILT	\$0	\$0		\$0
Easement Acquisition	\$2,528,400	\$0		\$2,528,400
Easement Stewardship	\$143,000	\$0		\$143,000
Travel	\$5,200	\$0		\$5,200
Professional Services	\$112,500	\$0		\$112,500
Direct Support Services	\$11,100	\$0		\$11,100
DNR Land Acquisition Costs	\$0	\$0		\$0
Capital Equipment	\$0	\$0		\$0
Other Equipment/Tools	\$7,500	\$0		\$7,500
Supplies/Materials	\$2,300	\$0		\$2,300
DNR IDP	\$0	\$0		\$0
Total	\$3,000,000	\$0		\$3,000,000

## Personnel

Position	FTE	Over # of years	LSOHC Request	Anticipated Leverage	Leverage Source	Total
Program Management	0.25	3.50	\$87,500	\$0		\$87,500
Easement Processing	0.30	3.00	\$58,500	\$0		\$58,500
Total	0.55	6.50	\$146,000	\$0		\$146,000

## Budget and Cash Leverage by Partnership

BudgetName	Partnership	LSOHC Request	Anticipated Leverage	Leverage Source	Total
Personnel	BWSR	\$146,000	\$0		\$146,000
Contracts	BWSR	\$44,000	\$0		\$44,000
Fee Acquisition w/ PILT	BWSR	\$0	\$0		\$0
Fee Acquisition w/o PILT	BWSR	\$0	\$0		\$0
Easement Acquisition	BWSR	\$2,528,400	\$0		\$2,528,400
Easement Stewardship	BWSR	\$143,000	\$0		\$143,000
Travel	BWSR	\$5,200	\$0		\$5,200
Professional Services	BWSR	\$0	\$0		\$0
Direct Support Services	BWSR	\$11,100	\$0		\$11,100
DNR Land Acquisition Costs	BWSR	\$0	\$0		\$0
Capital Equipment	BWSR	\$0	\$0		\$0
Other Equipment/Tools	BWSR	\$7,500	\$0		\$7,500
Supplies/Materials	BWSR	\$2,300	\$0		\$2,300
DNR IDP	BWSR	\$0	\$0		\$0
Total		\$2,887,500	\$0		\$2,887,500

## Personnel - BWSR

Position	FTE	Over # of years	LSOHC Request	Anticipated Leverage	Leverage Source	Total
Program Management	0.25	3.50	\$87,500	\$0		\$87,500
Easement Processing	0.30	3.00	\$58,500	\$0		\$58,500
Total	0.55	6.50	\$146,000	\$0		\$146,000

BudgetName	Partnership	LSOHC Request	Anticipated Leverage	Leverage Source	Total
Personnel	Morrison SWCD	\$0	\$0		\$0
Contracts	Morrison SWCD	\$0	\$0		\$0
Fee Acquisition w/ PILT	Morrison SWCD	\$0	\$0		\$0
Fee Acquisition w/o PILT	Morrison SWCD	\$0	\$0		\$0

Easement Acquisition	Morrison SWCD	\$0	\$0	\$0
Easement Stewardship	Morrison SWCD	\$0	\$0	\$0
Travel	Morrison SWCD	\$0	\$0	\$0
Professional Services	Morrison SWCD	\$112,500	\$0	\$112,500
Direct Support Services	Morrison SWCD	\$0	\$0	\$0
DNR Land Acquisition Costs	Morrison SWCD	\$0	\$0	\$0
Capital Equipment	Morrison SWCD	\$0	\$0	\$0
Other Equipment/Tools	Morrison SWCD	\$0	\$0	\$0
Supplies/Materials	Morrison SWCD	\$0	\$0	\$0
DNR IDP	Morrison SWCD	\$0	\$0	\$0
Total		\$112,500	\$0	\$112,500

Amount of Request: \$3,000,000

Amount of Leverage: \$0

Leverage as a percent of the Request: 0.00%

## Output Tables

**Table 1a. Acres by Resource Type**

Type	Wetlands	Prairies	Forest	Habitats	Total
Restore	0	0	0	0	0
Protect in Fee with State PILT Liability	0	0	0	0	0
Protect in Fee W/O State PILT Liability	0	0	0	0	0
Protect in Easement	132	0	1,188	0	1,320
Enhance	0	0	0	0	0
Total	132	0	1,188	0	1,320

**Table 2. Total Requested Funding by Resource Type**

Type	Wetlands	Prairies	Forest	Habitats	Total
Restore	\$0	\$0	\$0	\$0	\$0
Protect in Fee with State PILT Liability	\$0	\$0	\$0	\$0	\$0
Protect in Fee W/O State PILT Liability	\$0	\$0	\$0	\$0	\$0
Protect in Easement	\$300,000	\$0	\$2,700,000	\$0	\$3,000,000
Enhance	\$0	\$0	\$0	\$0	\$0
Total	\$300,000	\$0	\$2,700,000	\$0	\$3,000,000

**Table 3. Acres within each Ecological Section**

Type	Metro/Urban	Forest/Prairie	SE Forest	Prairie	Northern Forest	Total
Restore	0	0	0	0	0	0
Protect in Fee with State PILT Liability	0	0	0	0	0	0
Protect in Fee W/O State PILT Liability	0	0	0	0	0	0
Protect in Easement	0	660	0	0	660	1,320
Enhance	0	0	0	0	0	0
Total	0	660	0	0	660	1,320

**Table 4. Total Requested Funding within each Ecological Section**

Type	Metro/Urban	Forest/Prairie	SE Forest	Prairie	Northern Forest	Total
Restore	\$0	\$0	\$0	\$0	\$0	\$0
Protect in Fee with State PILT Liability	\$0	\$0	\$0	\$0	\$0	\$0
Protect in Fee W/O State PILT Liability	\$0	\$0	\$0	\$0	\$0	\$0
Protect in Easement	\$0	\$1,500,000	\$0	\$0	\$1,500,000	\$3,000,000
Enhance	\$0	\$0	\$0	\$0	\$0	\$0
Total	\$0	\$1,500,000	\$0	\$0	\$1,500,000	\$3,000,000

**Table 5. Average Cost per Acre by Resource Type**

Type	Wetlands	Prairies	Forest	Habitats
Restore	\$0	\$0	\$0	\$0
Protect in Fee with State PILT Liability	\$0	\$0	\$0	\$0
Protect in Fee W/O State PILT Liability	\$0	\$0	\$0	\$0
Protect in Easement	\$2,273	\$0	\$2,273	\$0
Enhance	\$0	\$0	\$0	\$0



**Table 6. Average Cost per Acre by Ecological Section**

Type	Metro/Urban	Forest/Prairie	SE Forest	Prairie	Northern Forest
Restore	\$0	\$0	\$0	\$0	\$0
Protect in Fee with State PILT Liability	\$0	\$0	\$0	\$0	\$0
Protect in Fee W/O State PILT Liability	\$0	\$0	\$0	\$0	\$0
Protect in Easement	\$0	\$2,273	\$0	\$0	\$2,273
Enhance	\$0	\$0	\$0	\$0	\$0

**Target Lake/Stream/River Feet or Miles**

8

# Parcel List

## Section 1 - Restore / Enhance Parcel List

No parcels with an activity type restore or enhance.

## Section 2 - Protect Parcel List

### Cass

Name	TRDS	Acres	Est Cost	Existing Protection?	Hunting?	Fishing?
Parcel list will be submitted in final report	2	0	\$0			

### Crow Wing

Name	TRDS	Acres	Est Cost	Existing Protection?	Hunting?	Fishing?
Parcel list will be submitted in final report	2	0	\$0			

### Morrison

Name	TRDS	Acres	Est Cost	Existing Protection?	Hunting?	Fishing?
Parcel list will be submitted in final report	2	0	\$0			

## Section 2a - Protect Parcel with Bldgs

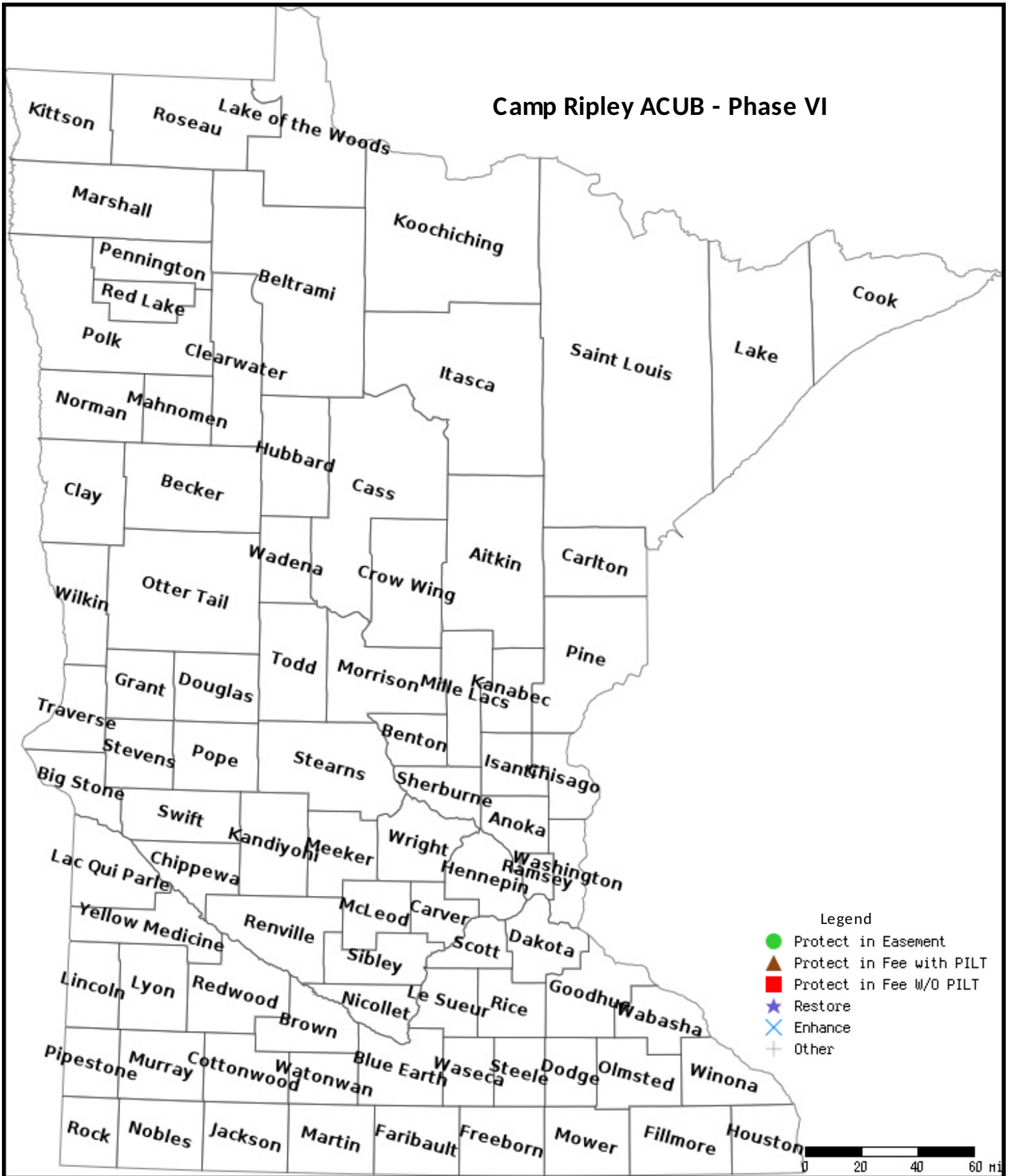
No parcels with an activity type protect and has buildings.

## Section 3 - Other Parcel Activity

No parcels with an other activity type.

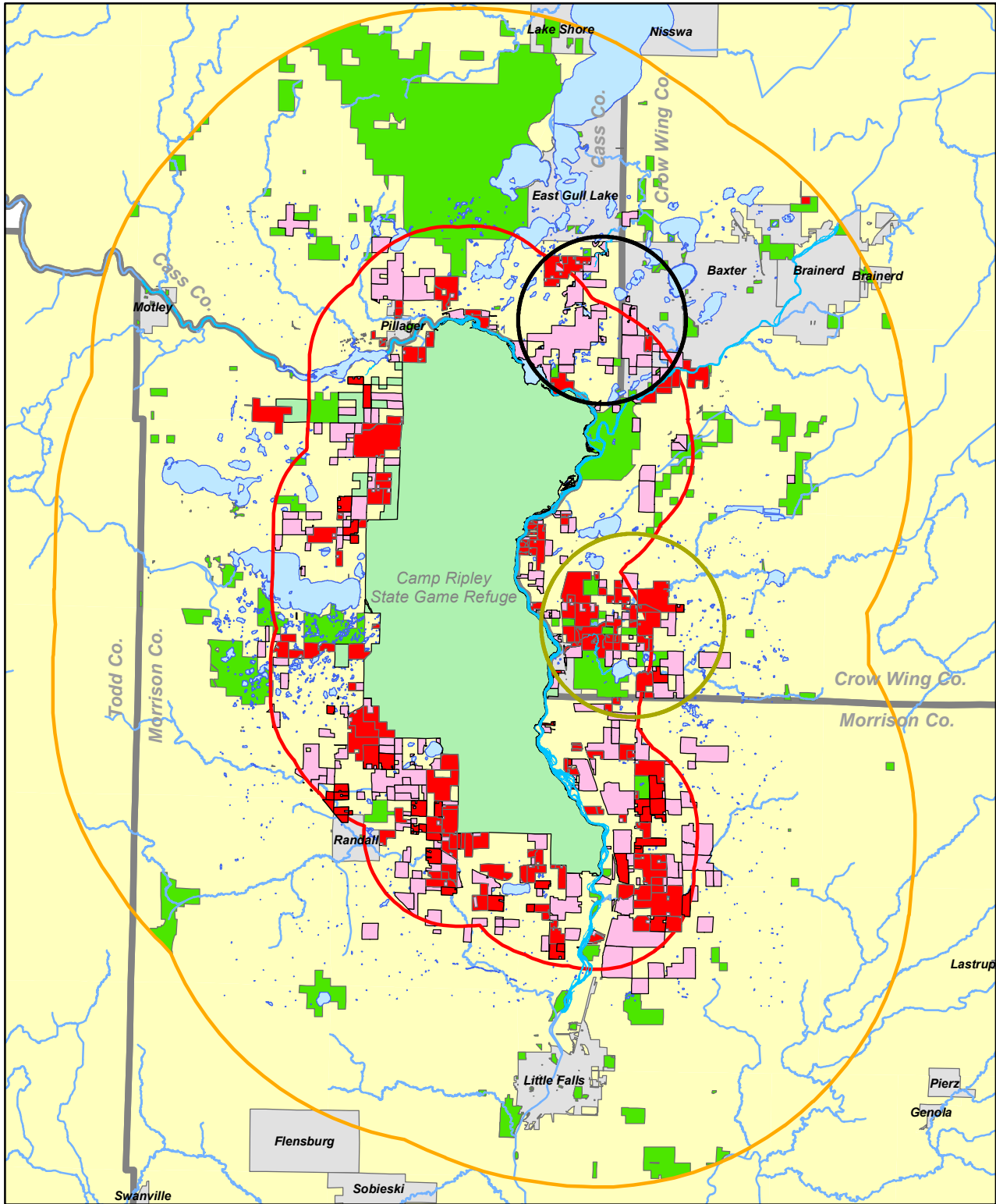
# Parcel Map

## Camp Ripley ACUB - Phase VI

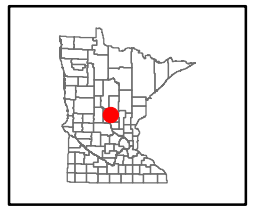
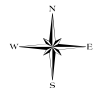
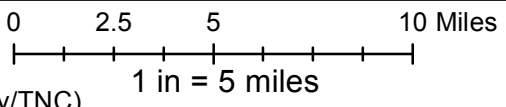


Data Generated From Parcel List

# Camp Ripley Army Compatible Use Buffer (ACUB)



- Protected Lands ACUB
- Interested Landowner Parcels
- Protected Compatible Lands (State/County/TNC)
- Little Nokasippi River WMA Work Area
- Gull River WMA Proposed Work Area
- 3-Mile Priority Area
- 10-Mile Priority Area
- Municipality
- Rivers and Lakes



Maps are for graphical purposes only. They do not represent a legal survey.

ACUB number	Acres	First Name	Last Name	Military Criteria Total	Land Criteria Total	Funding Priority Total	Total Criteria	Parcel Status	Red- Amber- Green	Partner Interest
325	1168	James & Debra	Knopik	95	15	61	171		Red	
110	55	Larry	Moran	90	12	60	162		Red	
96	118	Loyce	Moss	75	14	65	159		Red	
99	2300	MINN POWER & LIGHT CO		70	18	60	158		Red	
233	160	Bryce & Suzanne	Iveland	75	11	55	141		Red	
38	80	Rich	Nelson	70	12	55	137		Red	
97	13.6	Tom and Cookie	Martinson	70	11	55	136		Red	
245	235	Robert	Anderson	80	10	45	135		Red	
229	90	Gregory	Gangestad	70	10	50	130		Red	
236	628.86	Ivan	Petersen	65	14	50	129		Red	
322	87	Charles	Ehlen	65	14	50	129		Red	
340	310	Robert	Anderson	70	11	46	127		Red	
10	270	Steve	Lastovich	65	11	50	126		Red	
88	24	John	Bayard	65	9	50	124		Red	
306	60	Charles	Plante	65	14	45	124		Red	
155	122.3	POTLATCH TRS	MINNESOT	60	13	45	123		Red	
113	37.7	Thomas	Liemandt	60	12	45	122		Red	
244	316	Robert	Anderson	65	12	45	122		Red	
16	50	Mike & Jean	Kruchten	65	11	45	121		Red	
182	160	Clint	VanVickle	65	11	45	121		Red	
64	39.88	John	Monahan	65	11	45	121		Red	
258	532.57	Steve	Radloff	65	15	41	121		Red	
257	331	Steve	Radloff	70	11	35	121		Red	
153	107	POTLATCH TRS	MINNESOT	55	15	45	120		Red	
351	32.3	John & Donna	Jorgensen	60	13	45	118		Red	
23	80	Kevin	Metz	60	12	45	117		Red	
373	52.5	Michael	Finnegan	60	11	45	116		Red	
301	205.1	Robert	Masog	55	13	45	113		Red	
75	80	Thomas	Prescott	60	8	40	113		Red	
126	80	Gary	Engelmann	55	6	45	111		Red	
21	25	Rick	Lindquist	55	11	45	111		Red	
321	50	Ernie	Wallock	55	11	45	111		Red	
289	80	Gary & Rosemary	Hirman	60	11	40	111		Red	
331	17.9	Jamie	Gaddis	60	11	40	111		Red	
92	40	Gary	Johnson	55	11	40	111		Red	
58	22.32	Ryan	Gould	60	10	40	110		Red	
159	560	POTLATCH TRS	MINNESOT	55	14	40	109		Red	
166	20	Richard and Roxanne	Kruchten	60	9	40	109		Red	
335	45	Roger	Neu	55	13	36	109		Red	
213	24	Jim	Kramer	55	12	41	108		Red	

277	611 Jack	White	50	12	40	107	Red	
337	40 Charles	Hauer	55	12	40	107	Red	
89	325 Louie	Patnaude	60	11	36	107	Red	
40	80 Jay	Kolbeck	55	6	45	106	Red	
366	35 Bob & Pricilla	Madsen	55	6	40	106	Red	
42	80 Leroy	Collett	55	11	40	106	Red	
235	153 Lenny	Haffner	60	11	35	106	Red	
133	15 David	Gilson	55	10	40	105	Red	
220	54 Jay	Tody	55	10	40	105	Red	
282	483 Kent	Roessler	55	10	40	105	Red	
95	350 Eugene	Rohl	55	15	35	105	Red	
255	150 Harold	Gilson	55	9	40	104	Red	
300	55.8 David	Elstad	55	9	40	104	Red	
115	91.5 Jeff	Friedrich	50	13	40	103	Red	
303	37.64 Randahl	Hoghaug	50	12	40	102	Red	
43	54 Brian & Joyce	Alt	50	12	40	102	Red	
108	325 Francis	Perlinger	55	12	35	102	Red	
222	210 Donald	Gehrke	55	12	35	102	Red	
260	185 George & Terri	Vilinski	60	12	30	102	Amber	
61	80 Joseph	Perske	50	10	40	100	Red	
190	110 Carl and Linda	Thesing	55	10	30	100	Amber	
65	160 Richard	Schilling	55	10	30	100	Amber	
276	40 Douglas	Gilson	55	9	35	99	Red	
323	3 John	Schaubach	50	12	36	98	Red	
57	30 Stan	Dobosensk	50	12	36	98	Red	
243	219 Robert	Anderson	55	13	30	98	Amber	
206	200 Clyde	Bellefeuille	55	12	30	97	Amber	
109	120 Roy	Marlow	50	11	35	96	Red	
314	90 Richard	Waagen	50	11	35	96	Red	
228	145 Michael	Fenske	50	10	35	95	Red	
367	160 Darvin	Keehr	55	10	30	95	Amber	
242	597 Robert	Anderson	60	10	25	95	Amber	BWSR
334	55.8 Michael	Luconic	50	9	35	94	Red	
32	7.5 Bernard	Boone	55	8	31	94	Red	
283	155 Sharon	Cole	50	12	31	93	Red	
348	123 Suzanne	Vilinski	55	8	30	93	Amber	
341	160 Bradley	De Rosier	50	7	35	92	Red	
103	187 Mark & Karen	Schelonka	45	12	30	92	Amber	
345	25.49 Matthew	Japp	50	12	30	92	Amber	
41	140 Stan	Mudgett	50	12	30	92	Amber	
125	280 POTLATCH TRS	MINNESOT	45	6	35	91	Red	
37	10 Karlene	Schmidt	50	11	30	91	Amber	
184	140 Paul	Schilling	50	11	25	91	Amber	

196	297 Neil	Rakow	55	11	25	91	Amber
93	70 Winfield	Rudninger	45	11	25	91	Amber
333	36.3 Roland	Anderson, .	45	10	35	90	Red
34	70 Duane	Ballou	45	10	35	90	Red
311	11.4 Patrick	Ballantine	50	10	30	90	Amber
368	7.5 William	Unger	45	9	35	89	Red
91	40 Edward	Doucette	45	9	30	89	Amber
212	179 Chad	Converse	40	13	30	88	Amber
272	78.3 Matthew	Rausch	45	13	30	88	Amber
55	5 Tom	Oldenberg	50	8	30	88	Amber
138	436 Ron	Feia	40	12	35	87	Red
161	40 POTLATCH TRS	MINNESOT	45	12	30	87	Amber
310	37 Robert and Sarah	Imgrund	45	12	30	87	Amber
313	42.5 Michael	Stacken	45	12	30	87	Amber
326	234 Blaine	Brecht	45	12	30	87	Amber
82	80 Les	Kiffe	45	12	30	87	Amber
211	40 Charles	Ehlen (3)	40	11	35	86	Red
158	376 POTLATCH TRS	MINNESOT	45	11	30	86	Amber
175	88 David	Deedrick	50	6	30	86	Amber
327	338 David	Brutscher	50	11	25	86	Amber
154	41.6 POTLATCH TRS	MINNESOT	45	10	30	85	Amber
219	80 James & Jacquelyn	Bellamy	50	5	30	85	Amber
294	24.5 Alan	Sandvol	45	10	30	85	Amber
357	30 Thomas	Prozinski	40	9	35	84	Red
11	70 Gary	Engleman	45	9	30	84	Amber
291	80 Roger and Kevette	Thompson	40	14	30	84	Amber
302	49.75 Jon and Cylinda	Ring	40	14	30	84	Amber
359	40.16 Don	Peterson	45	9	30	84	Amber
76	60 James	Leske	45	9	30	84	Amber
278	80 Samuel	Plante	50	9	25	84	Amber
315	140 Kenneth	Packer	50	9	25	84	Amber
372	61 Donald	Hanson	40	13	30	83	Amber
218	318 Dennis	Tretter	50	8	25	83	Amber
195	98.6 Wanda	McDuffee-I	35	17	30	82	Amber
221	116 Howard	Kazeck	40	12	30	82	Amber
238	100 Evelyn	Meyer	40	12	30	82	Amber
377	114.9 John & Lisa	Peterson	40	12	30	82	Amber
194	75 Virgil	Litke	40	12	25	82	Amber
339	80 (Acortrails, LLC) Bruce	Bigalke	45	12	25	82	Amber
308	50.6 Thomas	Mathisen	40	11	30	81	Amber
203	80 Donald	Wermter	45	11	25	81	Amber
176	28 Dan	Parker	45	10	25	80	Amber
240	57 Douglas	Arnold	45	10	25	80	Amber

363	40 Joan	Peterson	45	10	25	80	Amber
252	15 David	Montague	50	10	20	80	Green
174	115 Joe	Sexton	45	9	20	79	Green
316	120 John and Karen	Meyer	50	9	20	79	Green
77	39 Donald	Trusty	45	7	26	78	Amber
273	40 Glen	Marteneze	45	8	25	78	Amber
361	41.13 Joan	Peterson	45	8	25	78	Amber
79	80 Steven	Solem	40	8	25	78	Amber
120	80 Milton	Wagner	40	12	25	77	Amber
183	20 Dianne	Roland	40	12	25	77	Amber
193	35 Emery	Strack	40	12	25	77	Amber
247	30 Matt	Galston	40	12	25	77	Amber
295	7.5 Thomas	McKay	50	7	20	77	Green
342	135 Brian	Justin	35	11	30	76	Amber
344	150 Pine Country Bank		35	11	30	76	Amber
371	110 Mark	Pugh	35	11	30	76	Amber
177	71.5 Father Tim	Wenzel	40	11	25	76	Amber
343	143 Dave	Puetz	40	11	25	76	Amber
261	172 Steve	Radloff	45	10	21	76	Amber
320	80 June (Carol Theno Trust)	Brutscher	45	11	20	76	Green
121	37 Patrick	Waltman	35	10	25	75	Amber
68	40 Karen	Schelonka	40	10	25	75	Amber
78	2 Bill	Bramscher	40	5	25	75	Amber
209	153.3 Darwin	Keehr (3)	45	10	20	75	Green
217	120 David	Brutscher	45	10	20	75	Green
360	30.5 Don	Peterson	40	9	25	74	Amber
141	40 Jayme	Schilling	45	9	20	74	Green
281	75.5 Edward	Allerman	35	13	25	73	Amber
358	40 David	Brill	45	8	20	73	Green
369	11 Steve	Vilinski	45	8	20	73	Green
87	40 John & Silvia	Luton	35	13	20	73	Green
29	100 Ron	Adamietz	35	12	25	72	Amber
86	25 Tom	Hanowski	45	12	15	72	Green
181	80 Tim	Lehnen	35	11	25	71	Amber
370	159 Mark	Pugh	35	11	25	71	Amber
374	20 Joe	Yasgar	35	11	25	71	Amber
72	9.6 Stephen	Mahling	30	11	25	71	Amber
237	40.98 Luke	Finch	40	11	20	71	Green
271	40 Greg	Schilling	40	11	20	71	Green
330	40 Potlatch c/o Ed Patrias		40	11	20	71	Green
12	127 Dale & Carol	Meredith	35	10	25	70	Amber
286	70 Larry	Schrupp	35	10	25	70	Amber
352	120 David	Waltman	35	10	25	70	Amber



356	20 Jon	Lovdahl	35	10	25	70	Amber
171	35 Michael	Waltman	45	10	15	70	Green
202	20 Michael	Jasmer	35	9	20	69	Green
101	10 Bob & John	Lee	40	9	20	69	Green
168	40 Brian	Fenske	35	8	20	68	Green
362	32.59 Joan	Peterson	40	8	20	68	Green
131	33 Craig and TyAnne	Rezac	35	7	20	67	Green
147	79.85 Alan	Grattan	40	7	20	67	Green
269	40 James	Colbert	35	12	20	67	Green
309	150 Richard	Wolch	35	12	20	67	Green
172	40 Todd	Dedomines	40	7	15	67	Green
287	160 Francis	Januschka	40	1	25	66	Amber
375	68.5 Tim	Strack	30	11	25	66	Amber
106	80 Duanne & Cynthia	Witucki	35	11	20	66	Green
167	20 Ronald	Andersen	35	6	20	66	Green
256	30 Dennis	Prozinski	35	11	20	66	Green
346	80 Samuel	Schuldt	30	10	25	65	Amber
297	45 Jonathan	Nelson	35	10	20	65	Green
365	40 Larry	Vilinski	40	10	15	65	Green
290	564 Jerry	Januschka	35	3	25	63	Amber
227	152 Tom	Wenzel	30	13	20	63	Green
305	78 Bruce	Paine	30	13	20	63	Green
170	50 Steve	Wenzel	35	7	20	62	Green
210	40 Charles	Ehlen (2)	30	11	20	61	Green
332	70 Lloyd	Lapka	30	10	20	60	Green
198	80 David	Strand	30	12	15	57	Green
264	33 David	Bergin	35	7	15	57	Green
353	10 Bob	Wenzel	25	11	20	56	Green
354	20 Carmen	Goldsmith	25	11	20	56	Green
127	40 Jim	Parent	30	10	15	55	Green
67	40 Rockie & Leanne	Hoerter	30	10	15	55	Green
355	20 Lawrence	Killeaney	25	9	20	54	Green
146	31.33 Ray	Perry	30	9	15	54	Green
364	17.37 Michael & Bonnie	Tholen	35	4	15	54	Green
285	20 Curtis	Bellefeuille	35	9	10	54	Green
149	120 Steve	Melgard	20	3	25	53	Amber
288	310 James	Strahl	25	2	25	52	Amber
336	160 Raymond	Johanson	25	2	25	52	Amber
262	80 Robert & Rebecca	Johnson	25	2	20	47	Green
268	280 Thomas	Marcy	25	2	20	47	Green
207	160 Darwin	Keehr (1)	25	1	20	46	Green
24	500 Dean	Schilling	25	1	20	46	Green
188	160 Daniel	Strack	25	0	20	45	Green

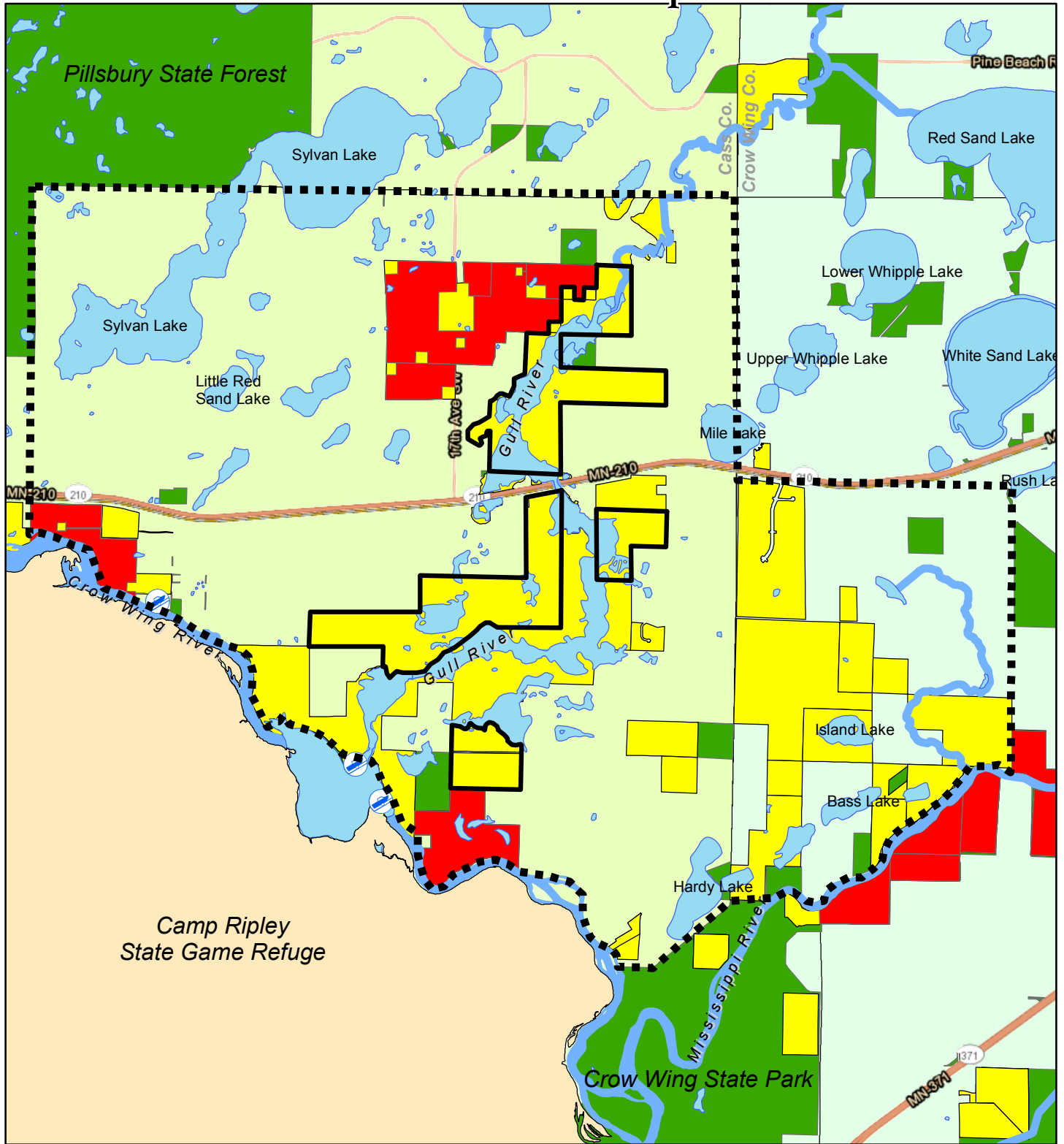
216	320 Mark	Eckelman	20	2	20	42	Green	
62	80 Daven	Hanson	20	1	20	41	Green	
85	10 Theresa	Cooper	25	6	10	41	Green	
347	280 Michael	Vinje	20	0	20	40	Green	
350	160 Michael	Doran	20	0	20	40	Green	
56	40 Mike	Daniels	20	4	15	39	Green	
180	80 Leon	Pusc	20	2	15	37	Green	
376	80 Larry	Ehoff	20	0	15	35	Green	
296	40 Jared	Feierabend	15	3	15	33	Green	
178	80 Gary	Pusc	15	2	15	32	Green	
189	20 Daniel	Strack	15	2	5	27	Green	
231	40 Jeff	Schilling	15	0	10	25	Green	
253	13.2 Michael	Gendron	10	2	10	22	Green	
312	40 Gregory	Ostrowski	10	1	10	21	Green	
1	280 David	Bergin	50	8	35	93 Complete	Red	DNR
100	978 Potlatch Lake	State Timb	80	13	60	158 Complete	Red	BWSR
102	400 Jon & Eva	Lee	55	14	40	109 Complete	Red	BWSR
104	325 James & Debra	Knopik	95	14	61	175 Complete	Red	BWSR
105	364 Douglas	John	40	11	35	86 Complete	Red	BWSR
111	176 Blaine	Brecht	50	14	40	109 Complete	Red	BWSR
112	90 John	Balaski	65	13	46	124 Complete	Red	BWSR
114	171 Allen	Groves	65	11	55	131 Complete	Red	BWSR
116	80 Tom	Brutscher	50	10	20	80 Complete	Green	BWSR
117	160 Robert	Anderson	75	14	40	129 Complete	Red	BWSR
122	260 Duane	Hendricks	65	11	45	121 Complete	Red	BWSR
123	574 Richard	Pickar	65	15	46	131 Complete	Red	BWSR
124	63 Becca	Nash	15	2	20	37 Complete	Green	DNR
128	50 Jim	Parent	45	12	25	82 Complete	Amber	BWSR
130	58.6 Peter	Lange	50	10	26	86 Complete	Amber	BWSR
132	355 Kevin and Carol	Doucette	55	13	30	98 Complete	Amber	BWSR
135	110 Lowell	Johnson	45	14	25	84 Complete	Amber	BWSR
137	200 Dennis	Newman	50	11	40	106 Complete	Red	BWSR
139	160 Ernie	Wollock	65	13	55	138 Complete	Red	BWSR
140	120 Jeff	Holmstrom	60	12	45	122 Complete	Red	BWSR
142	80 Nancy	Karasch	50	10	35	100 Complete	Red	BWSR
143	5 Steve	Nusbaum	50	12	35	97 Complete	Red	DNR
144	40 Mike	Reeser	55	12	35	102 Complete	Red	BWSR
145	150 Robert	Christianso	50	10	40	100 Complete	Red	BWSR
148	120 Larry	DeRosier	45	11	30	86 Complete	Amber	BWSR
150	140 Grant	Johnson	55	14	45	119 Complete	Red	BWSR
151	85 Thomas	Goebel	55	12	45	117 Complete	Red	BWSR
152	80 Juanita and Terry	Wallin	55	8	40	103 Complete	Red	BWSR
169	77.5 Robert	Waltman	60	11	30	101 Complete	Amber	BWSR

17	160 Mike	Roach	65	14	50	129 Complete	Red	BWSR
173	146 Bill	Serie	80	11	45	136 Complete	Red	BWSR
179	160 Eric	Nelson	55	13	40	108 Complete	Red	BWSR
18	240 Herb & Harriet	Turner	65	12	50	127 Complete	Red	BWSR
185	80 David	Brutscher	55	9	25	89 Complete	Amber	BWSR
186	535 Charles	Ehlen	75	14	60	154 Complete	Red	BWSR
187	40 Adelle	Chisholm	45	9	20	74 Complete	Green	BWSR
19	400 Dale	Nelson	50	10	40	100 Complete	Red	BWSR
192	174 Tom	Brutscher	75	9	45	129 Complete	Red	BWSR
197	40 Troy	Wilcox	35	11	20	66 Complete	Green	BWSR
199	80 Steve	Muenchow	60	10	45	115 Complete	Red	BWSR
2	160 Gordon	Wheeler, Jr	45	13	40	103 Complete	Red	BWSR
20	40 Tony	Wenzel	55	11	40	106 Complete	Red	BWSR
200	83 Dennis	Schmidt	45	14	30	89 Complete	Amber	BWSR
201	230 Russ	Nygren	70	12	55	137 Complete	Red	BWSR
204	80 James	Crozier	65	10	45	120 Complete	Red	BWSR
205	158 Michael	Caron	65	17	46	133 Complete	Red	DNR
208	148 Darwin	Keehr (2)	60	12	30	102 complete	Amber	BWSR
214	160 Grandpa's Ponderosa		60	15	45	120 Complete	Red	BWSR
215	119 Roger	Stanek	40	10	25	75 Complete	Amber	BWSR
22	320 Tom	Koenig	55	11	45	111 Complete	Red	DNR
223	40 Adam	Gilson	55	10	35	100 Complete	Red	BWSR
224	43.5 Earl	Norwood	80	13	65	158 Complete	Red	BWSR
225	13.1 Tom and Janelle	Smude	45	3	20	68 Complete	Green	BWSR
226	140 Brian	Killeaney	50	12	40	102 Complete	Red	BWSR
230	22 Tom	Gilson	40	10	25	75 Complete	Amber	BWSR
232	189.5 Lance	Houle	60	12	35	107 Complete	Red	BWSR
234	40 Daniel & Sally	Bigalke	55	10	40	110 Complete	Red	BWSR
241	138 Robert	Anderson	90	12	55	157 Complete	Red	BWSR
246	285 Robert	Anderson	70	11	45	126 Complete	Red	BWSR
248	40 Darrell	Bigalke	55	9	40	104 Complete	Red	BWSR
249	160 Robert & Cory	Feigum	70	13	55	138 Complete	Red	BWSR
25	40 Robert	Brown	55	9	40	104 Complete	Red	BWSR
250	172 TREB ACRES		80	13	60	153 Complete	Red	BWSR
251	80 VINTAGE PROP	LIMITED PF	60	11	45	116 Complete	Red	BWSR
254	160 Daniel	Saulter	60	10	30	100 Complete	Amber	BWSR
259	160 Thomas	Prozinski	50	12	40	102 Complete	Red	BWSR
26	109 Jim	Brisk	50	11	25	91 Complete	Amber	BWSR
263	280 Richard	Copa	50	12	30	92 Complete	Amber	BWSR
265	30 Daniel	Klima	40	10	20	70 Complete	Green	BWSR
266	120.5 Bernard	Doucette	50	14	35	99 Complete	Red	BWSR
267	40 David	Baumann	45	12	25	82 Complete	Amber	BWSR
27	82 Rolland	Mammeng	50	11	35	101 Complete	Red	BWSR

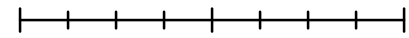
270	40 Greg	Enerson	50	13	30	93 Complete	Amber	BWSR
274	603 Mervin	Eisel	50	12	35	97 Complete	Red	BWSR
275	40 Douglas	Gilson	40	14	25	79 Complete	Amber	BWSR
279	102 Chet	Nelson	55	13	31	99 Complete	Red	BWSR
28	160 Brian	Edberg	65	14	50	129 Complete	Red	DNR
284	200 James	Cole	55	12	40	112 Complete	Red	BWSR
292	40 Brian	De Rosier	40	8	20	68 Complete	Green	BWSR
298	40 Wayne & Jan	Retka	45	10	25	80 Complete	Amber	BWSR
299	23.9 Phil	Trusty	65	13	50	128 Complete	Red	BWSR
3	4.5 John	Schaubach	50	11	36	102 Complete	Red	DNR
30	74 Phil	Trusty	70	10	55	140 Complete	Red	DNR
304	15.3 Larry	Japp	50	9	35	94 Complete	Red	BWSR
307	40 Thomas	Stockard	40	10	20	70 Complete	Green	BWSR
31	320 Ron & Joan	Thelen	70	12	55	147 Complete	Red	BWSR
317	146 Dave	LaVergne	75	13	45	133 Complete	Red	BWSR
318	40 Ann	Hunnicutt	55	13	35	103 Complete	Red	BWSR
319	50.73 George	Kleinschmi	55	10	40	105 Complete	Red	BWSR
324	40 Kevin & Marie	Festler	55	11	30	96 Complete	Red	BWSR
328	25 John	Anderson	50	7	25	82 Complete	Amber	BWSR
329	140.5 Earl	Norwood	80	13	65	158 Complete	Red	BWSR
33	40 Michael	Morrissette	60	12	35	107 Complete	Red	BWSR
338	Kim	Hutchens	0	0		Complete	0	BWSR
349	120 Jason	Pierzina	50	13	35	98 Complete	Red	BWSR
35	80 Richard	Kloss	55	8	40	103 Complete	Red	BWSR
36	155 Brian	Justin	50	14	40	104 Complete	Red	BWSR
39	40 Sheldon	Prozinski	50	10	35	100 Complete	Red	BWSR
4	50 Justin and Tiffany	Linhardt	55	9	31	105 Complete	Red	DNR
45	320 Linda	Beaner	60	14	50	134 Complete	Red	BWSR
46	120 Randy	Hamson	40	15	25	80 Complete	Amber	BWSR
49	57 Parks and Trails Council	of Minnesc	30	12	20	62 Complete	Green	DNR
5	30 Duane & Evelyn	Hartman	55	10	41	106 Complete	Red	BWSR
52	180 Bob	Ledin	65	7	45	117 Complete	Red	BWSR
53	69 Russ	Nygren	60	9	40	109 Complete	Red	BWSR
54	30.9 Mark	Wettlaufer	40	9	25	74 Complete	Amber	BWSR
59	47 Duain	Guin	55	15	40	110 Complete	Red	DNR
6	120 George	Vogt	50	11	20	81 Complete	Green	BWSR
60	40 Robert	Bertsch	40	8	30	83 Complete	Amber	BWSR
66	149 Chet and Nina	Vukelich	50	12	25	92 Complete	Amber	BWSR
69	99 Norman	Ballou	45	12	30	92 Complete	Amber	BWSR
7	80 Ron	Carlson	60	10	50	125 Complete	Red	BWSR
70	117 Darwin & Marajan	Osvold	60	16	46	127 Complete	Red	DNR
71	195 John	Simon	70	13	60	148 Complete	Red	DNR
73	20 Bill & Lois	Brenner	65	11	45	121 Complete	Red	BWSR

74	145 Gene & Mary	Peterson	60	14	45	119 Complete	Red	DNR
80	700 Tom	Brutscher	85	10	55	150 Complete	Red	BWSR
81	670 Greg, Victoria, Barbra	Booth, Ketl	45	11	35	96 Complete	Red	BWSR
83	160 Steven and Doris	Lange	60	12	35	112 Complete	Red	BWSR
90	315 Curtis	Gilson	65	15	50	130 Complete	Red	BWSR
98	220 David	Hamernick	50	14	40	104 Complete	Red	BWSR
47	220 State of Minnesota	DNR	20	4	26	55 Complete (Partner \$ only	Amber	DNR
48	88 State of Minnesota	DNR	35	13	25	78 Complete (Partner \$ only	Amber	DNR
50	100 State of Minnesota	DNR	55	14	40	109 Complete (Partner \$ only	Red	DNR
	100 Ray & Joan	Williams					Amber	
114	Bob	Ledin	50	9	40	99 INACTIVE	Red	
	17 Debbi	Kinney	55	6	40	101 INACTIVE	Red	
	20 Brian	Bachman	45	11	35	96 INACTIVE	Red	
	20 Carl and Linda	Thesing	40	7	15	62	Green	
	27 Jim	Madland	65	9	50	124 INACTIVE	Red	
	30 James	Garner	30	10	20	60 INACTIVE	Green	
304	Shawn	Sunnarborç	25	1	20	46 INACTIVE	Green	
	35 Bob	Hartman	60	13	46	119 INACTIVE	Red	
	35 Don & Mayva	Kottke	50	7	36	93 INACTIVE	Red	
	39 Dave	Bergin	35	12	20	72 INACTIVE	Green	
	4 Deb	Teachert	35	3		INACTIVE	0	
	40 Shawn	Sunnarborç	45	11	25	86 INACTIVE	Amber	
	5 Stacy	Fischer	35	2		INACTIVE	0	
	50 Noah	Smith	55	10	36	101 INACTIVE	Red	
	54 Arnold	Kinney	15	2	15	32 INACTIVE	Green	
	72 Brian	Anderson	65	14	45	124 Easement held by TNC	Red	
	80 Charles	Swenson	65	13	50	128 INACTIVE	Red	
	80 Shawn	Sunnarborç	45	10	25	85 INACTIVE	Amber	
	91 Shawn	Sunnarborç	35	9	20	64 INACTIVE	Green	








# Gull River WMA Work Area Map



0 0.5 1 2 Miles



1 in = 1 miles

-  Proposed Gull River WMA
-  Gull River WMA Work Area
-  Camp Ripley (State Game Refuge)
-  Completed Easements or Aquisitions via ACUB
-  Interested/Targeted Parcels
-  Compatible Lands - State or County Managed
-  Public Access

Maps are for graphical purposes only. They do not represent a legal survey.

